



Montana Environmental Information Center



The Quarantine Series

“Coal Mining in Montana”



MEIC

Coal Mining and Water Pollution

- Water is contaminated through increased exposure to coal seam and air, causing increases in sulfates, sediment, nitrate / nitrites, dissolved solids, salts, calcium, magnesium, and heavy metals.





Coal Mining and Dewatering

- The coal seam is the aquifer, and so when you remove the coal seam, you also mine out the aquifer.





Coal Mining and Climate Change

- Montana coal production is almost entirely dedicated towards energy production at coal-fired power plants. The resulting CO₂ changes our climate.

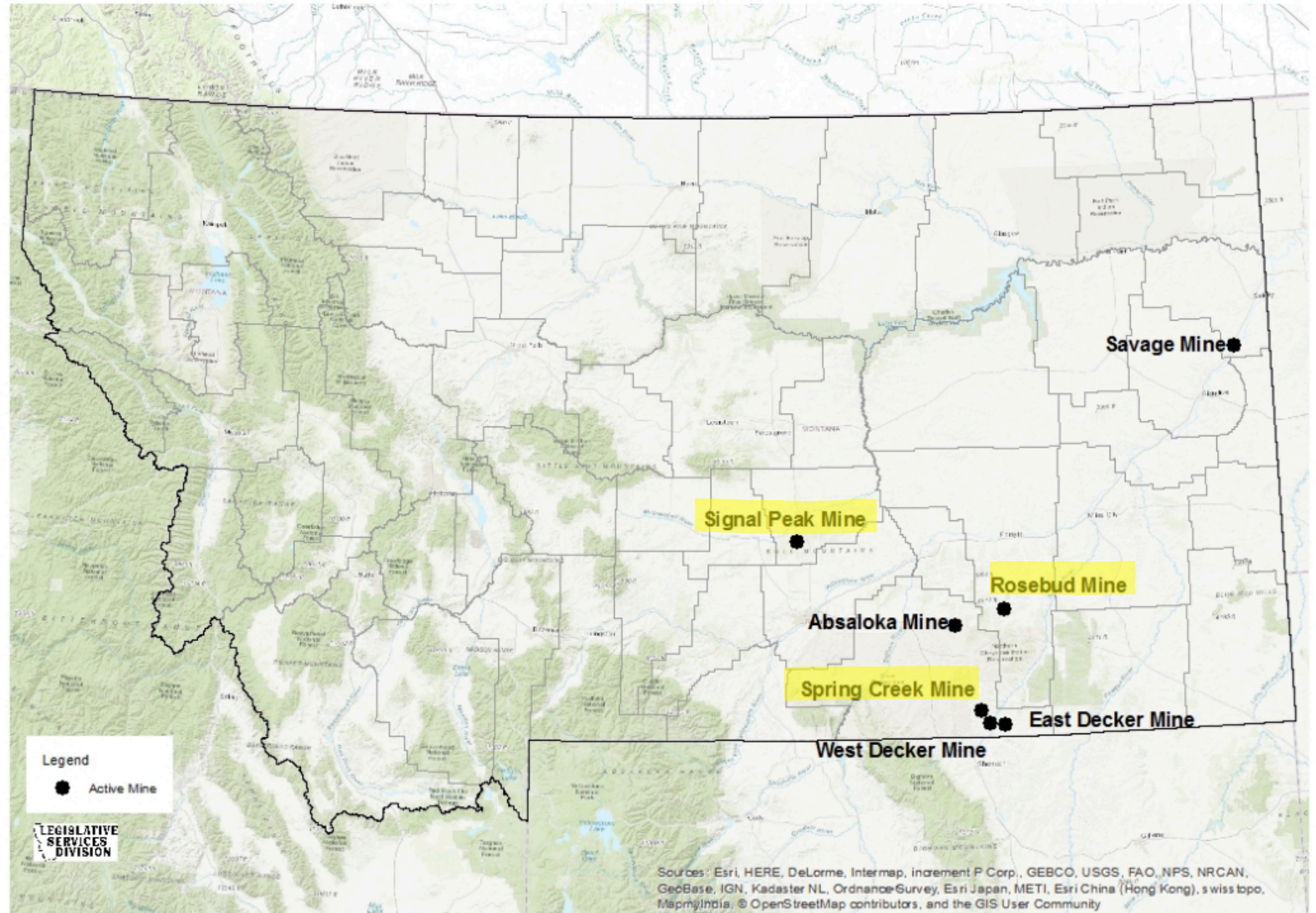




MEIC

MEIC has
legal action
against the
highlighted
mines

Active Coal Mines in Montana





Spring Creek Coal Mine

15 million tons of coal produced each year equals:

- 30 million tons of CO₂ in the air each year
- 300 million tons of CO₂ in the air in 1 decade

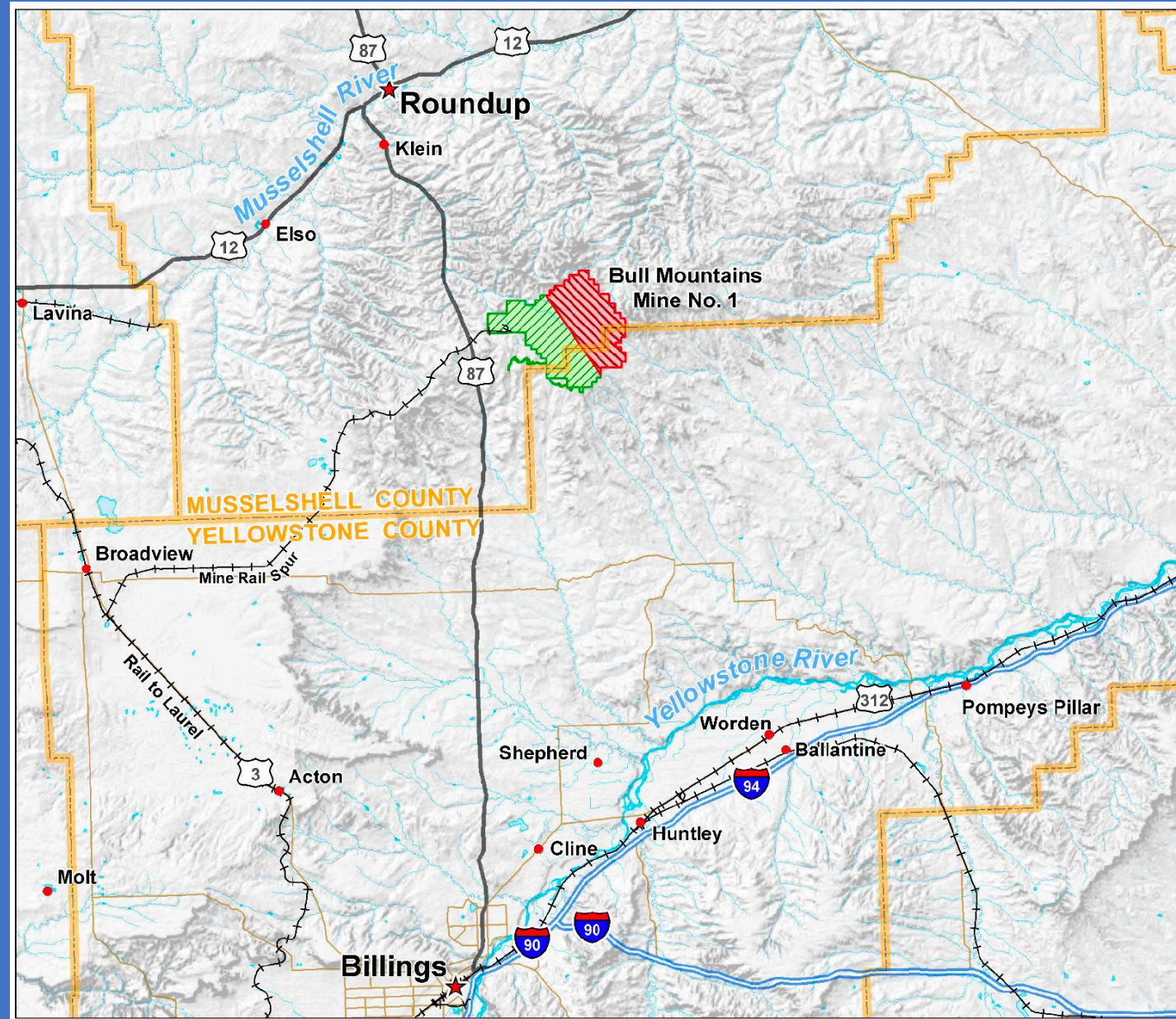
To sequester 300 million tons of CO₂, you need:

- 4.5 billion tree seedlings grown for 10 years.





Signal Peak Energy's - Bull Mountain Mine





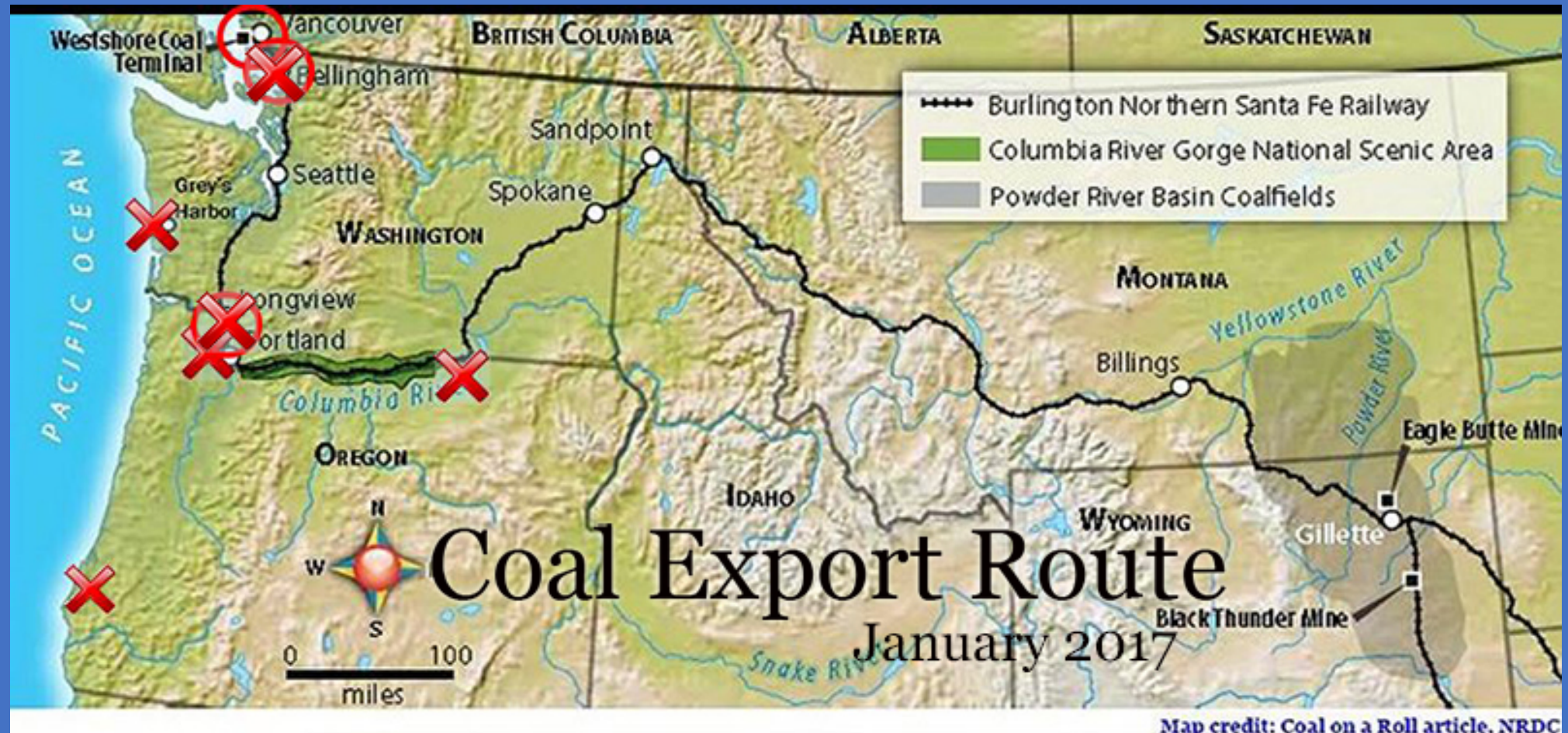
Bull Mountain – Signal Peak

- Montana's only underground coal mine
- Nearly all coal is slated for export.
- Recent federal approval would make it the largest underground coal mine in nation.
- Impacts to water quality and quantity, endangered species, climate change.





Montana Coal Exports: A Losing Proposition



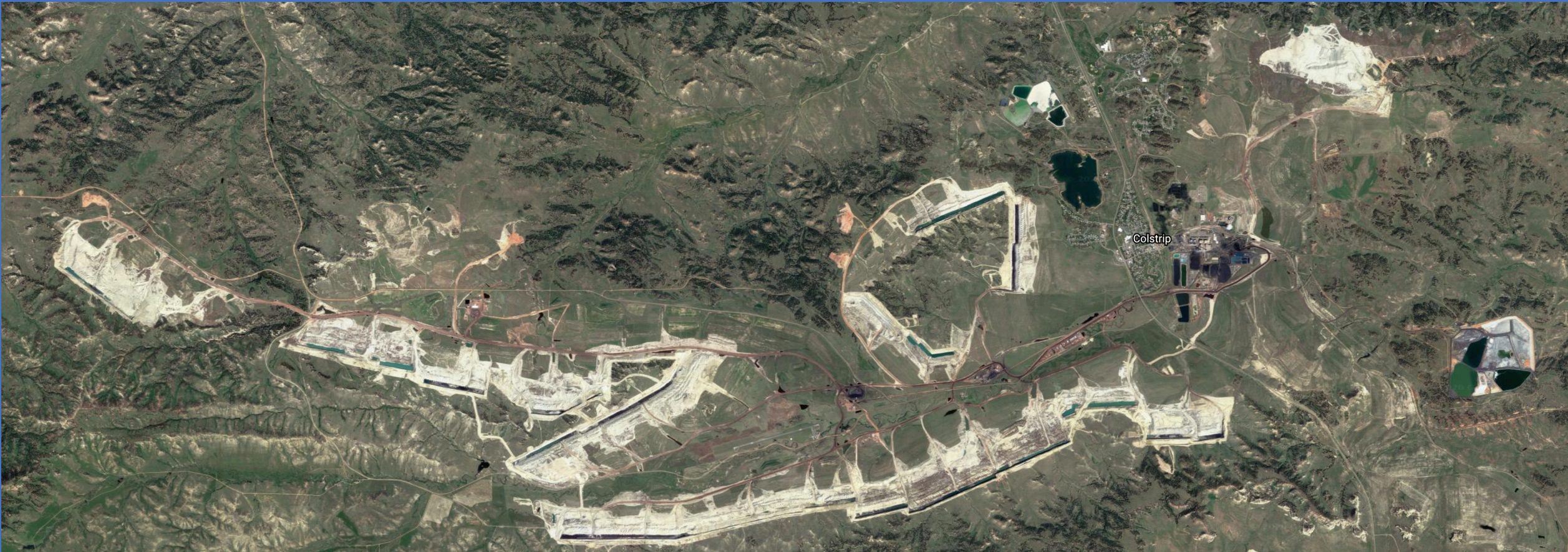


Rosebud Mine Case Study



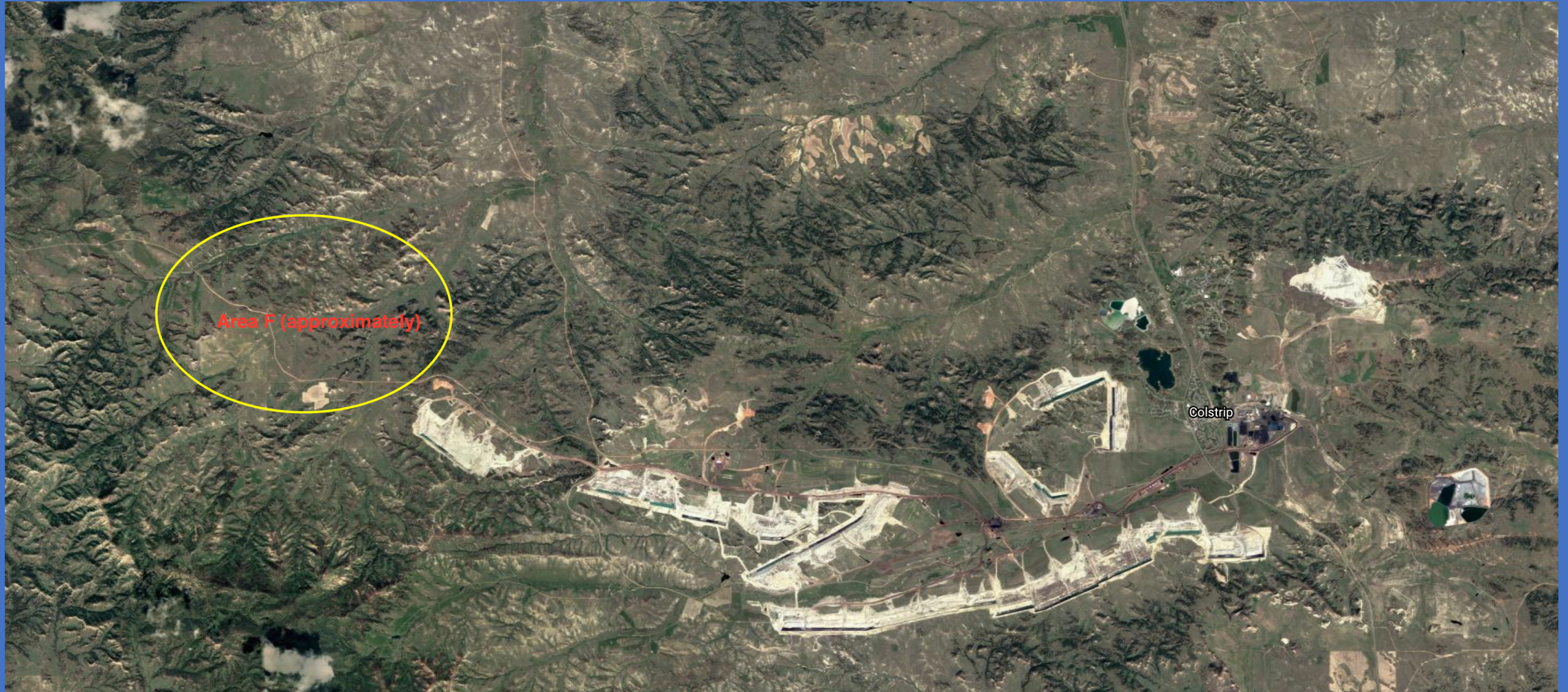


Rosebud Mine





Area F Expansion at Rosebud Mine





Water Quality Issues



Yellowstone River

Armells Creek

West Fork Armells Creek

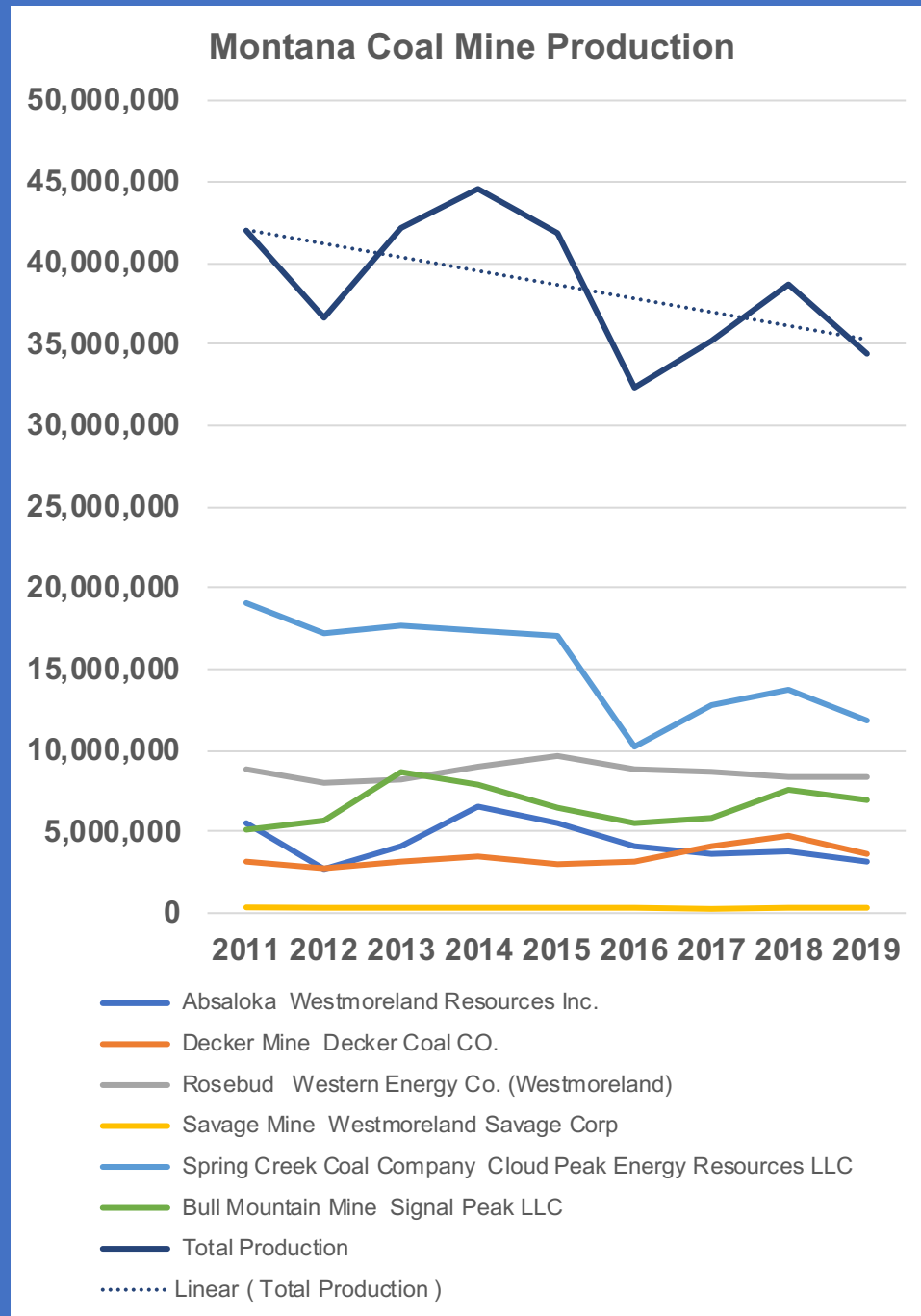
East Fork Armells Creek

Area F

Coal Ash Ponds



Montana Mine Production





“The problem we’ve had is the (economic) data isn’t like riding a bike downhill — it’s like being in an elevator where the cable’s snapped,” Prof Godby said.

Prof. Robert W. Godby, Director for Energy Economics & Public Policies Center; Associate Professor, University of Wyoming

Coal Economics and COVID-19

US coal mining jobs in sharp fall

Employment, monthly



Source: US Bureau of Labor Statistics

© FT



Montana at Risk





Questions & Answers

Using the “Chat” function, please type in your question

For more information or to join MEIC
go to:
meic.org

