

**NorthWestern Energy
Docket No. D2018.2.12
Electric General Rate Review**

**Montana Consumer Counsel
Set 2 (061-115)**

Data Requests received November 5, 2018

MCC-064

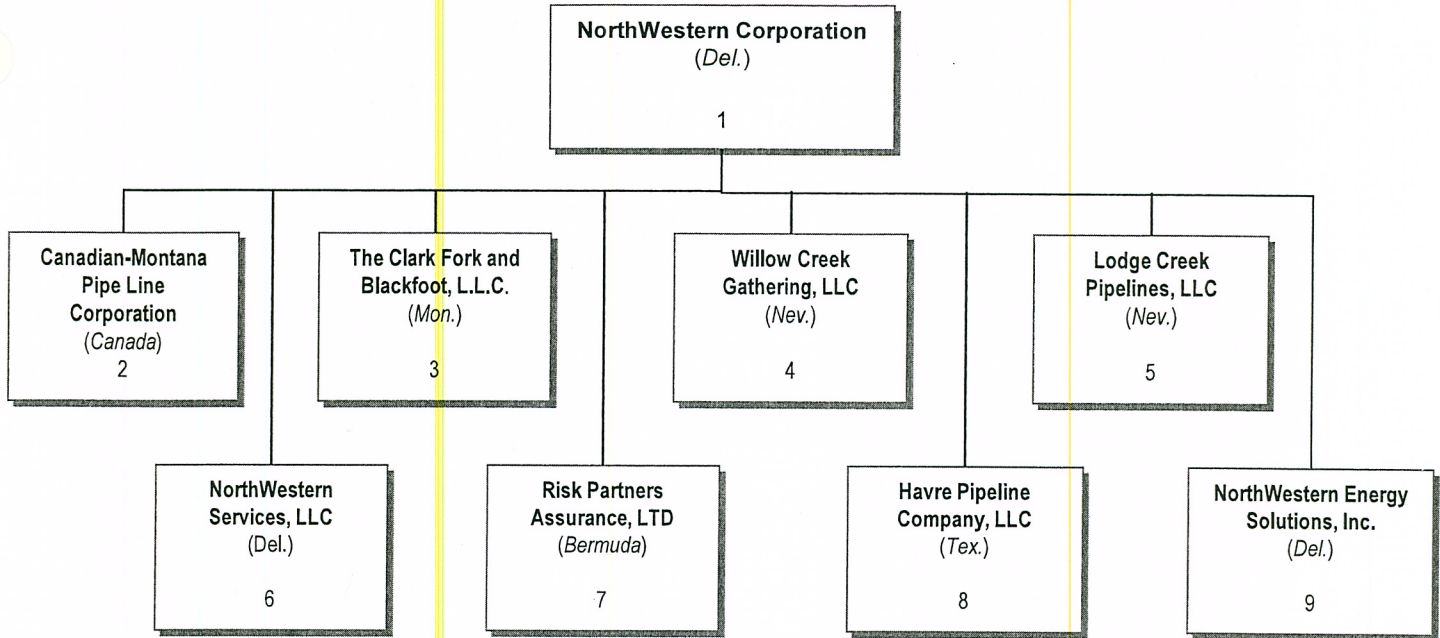
Regarding: Corporate Structure

Witness: Bird

Please provide a block diagram that shows the corporate structure of NorthWestern Energy, indicating all subsidiaries (if any) and divisions; also, please list the officers and members of the board of directors of NorthWestern Energy, as well as the officers and members of the board of directors of any wholly-owned subsidiaries.

RESPONSE:

See Attachments 1 and 2.



NorthWestern Entities

- 1 NorthWestern Corporation is the parent company.
- 2 Canadian-Montana Pipe Line Corporation owns natural gas pipeline that crosses the Canadian border.
- 3 The Clark Fork and Blackfoot, L.L.C. owned the Milltown Dam facility in Montana (dam has been dismantled)
- 4 Willow Creek Gathering, LLC owns a natural gas gathering system in northern Montana.
- 5 Lodge Creek Pipelines, LLC owns a natural gas gathering system in northern Montana.
- 6 NorthWestern Services, LLC (NSC) operates our nonregulated natural gas marketing business in SD (one capacity contract).
- 7 Risk Partners Assurance, Ltd. is our captive insurer (for old claims related to Blue Dot and two other former subsidiaries).
- 8 Havre Pipeline Company, LLC owns a natural gas transmission and gathering system in northern Montana. (NorthWestern Corporation holds a 94.99% ownership interest in this entity).
- 9 NorthWestern Energy Solutions, Inc., holds approximately 3.3% of the common stock of Kilowatt Labs, Inc.

**NorthWestern Corporation and Subsidiaries
Boards of Directors and Officers
As of November 12, 2018**

NorthWestern Corporation (a Delaware corporation – 11/27/23)

Directors

Stephen P. Adik Board Chair
Anthony T. Clark Director
Dana J. Dykhouse Director
Jan R. Horsfall Director
Britt E. Ide Director
Julia L. Johnson Director
Robert C. Rowe Director
Linda G. Sullivan Director

Executive Officers

Robert C. Rowe President and Chief Executive Officer
Brian B. Bird Chief Financial Officer
Michael R. Cashell Vice President – Transmission
Heather H. Grahame General Counsel and Vice President – Regulatory & Federal Government Affairs
John D. Hines Vice President – Supply & Montana Government Affairs
Crystal D. Lail Vice President and Controller
Curtis T. Pohl Vice President – Distribution
Bobbi L. Schroepel Vice President – Customer Care, Communications and Human Resources

Other Appointed Officers

Emily J. Larkin Assistant Corporate Secretary
M. Andrew McLain Director, Transmission Marketing Strategy & FERC Compliance Officer
Travis E. Meyer Director of Corporate Finance & Investor Relations Officer
Michael L. Nieman Chief Audit and Compliance Officer
Emilie Ng Assistant Treasurer
Timothy P. Olson Corporate Secretary
Daniel L. Rausch Treasurer
Jeanne M. Vold Business Technology Officer
Elaine A. Vesco Assistant Controller

Risk Partners Assurance, Ltd. (Bermuda corporation – 9/21/01)

D. Bradfield Adderley (Joelina Redden alternate) Director
Lawrence Bird (James Broadbent alternate)..... Director
Donna Haeder Director & Chairperson
Brian B. Bird Director & Deputy Chairperson
Carol Bray..... Secretary
Appleby Services (Bermuda) Ltd..... Assistant Secretary

The Clark Fork and Blackfoot, L.L.C. (Montana LLC)

Robert C. Rowe President & Chief Executive Officer
Brian B. Bird Chief Financial Officer
Timothy P. Olson Secretary
Emily J. Larkin Assistant Secretary